

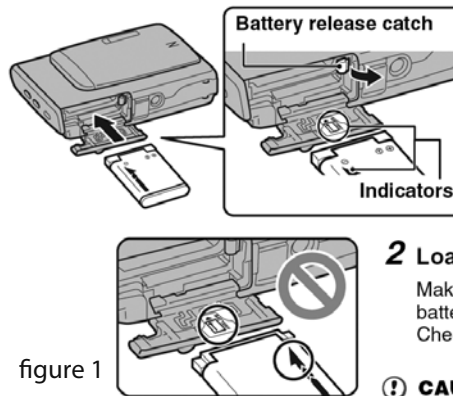
Notification to Owners of Fujifilm FinePix Z10fd

Notification Regarding Insertion of the Battery for the Fujifilm FinePix Z10fd

As indicated in the instructions originally provided with your camera packaging, proper handling of Lithium-ion batteries is very important. The battery must be correctly inserted into the camera slot to ensure proper operation of the camera.

If the battery is inserted incorrectly and forced into the slot, there is a potential for the battery to become jammed in the camera. If the battery becomes jammed, please contact the FUJIFILM Repair Centre and we will remove the battery and return it to you free of charge. You should not try to remove the battery by force or by gripping it with any tools such as tweezers or pliers, since this can cause a Lithium-ion battery to overheat or ignite.

The battery for the Z10fd should be inserted as per the instructions in the Owner's Manual (Figure 1). It is important that the indicators are aligned properly to ensure correct insertion of the battery.

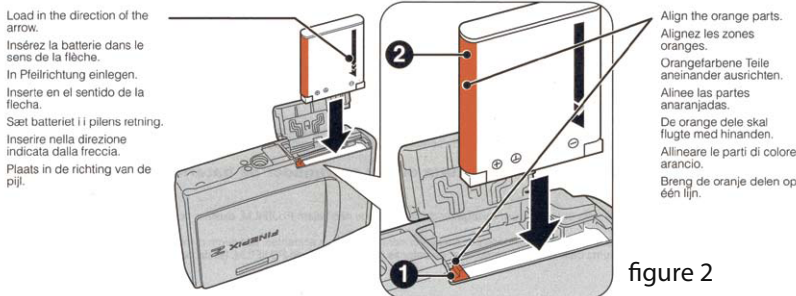


2 Load the battery.

Make sure that the indicators are aligned. Push the battery release catch down while loading the battery. Check that the battery is firmly held in place.

CAUTION

Load the battery in the correct direction.



For your convenience, we have prepared a battery marked with an orange stripe to match the orange colour of the battery release catch making it even easier to insert the battery into your camera in the correct direction. (Figure 2)

If you currently have the battery without the orange stripe and would like the new NP-45 battery with orange marking (serial number required as proof of eligibility, (see Figure 3), please contact FUJIFILM Australia Pty Ltd on details below and provide proof of purchase documents and serial number of the camera.

For further information regarding the above, please contact:

FUJIFILM Australia Pty Ltd
 Toll Free: 1800 226 355
 Web: www.fujifilm.com.au



figure 3